



SOLO®-6 MD 6 SOURCE WEATHER-RESISTANT MASTER KEYPAD WITH BUILT-IN PLASMA/LCD-PROOF IR SENSOR

KEY FEATURES

- **Weather-Resistant Construction** The Solo-6 MD keypad can be installed in damp areas such as bathrooms, spas, or outside on the patio.
- **LCD Display** Provides source selection and setup information, plus all of the artist, album, and song information needed to navigate today's digital sources.
- **One Touch To Entertainment™** With the Solo-6 MD, a single press of a button can operate your ZR-6 MultiZone entertainment system.
- **Plasma/LCD-Proof IR Sensor** For wireless remote control operation, a plasma/LCD-proof IR sensor is built into the Solo-6 MD.
- **Three Soft Keys** The function of these keys is displayed in the LCD and changes as necessary to control the selected source and to navigate through menus.
- **Attractive Styling** The clean, uncluttered look of the Solo-6 MD blends with any home's décor.
- **Designer Colors** The Solo-6 MD comes packaged with color change kits in white, light almond and bone. Additional colors are available check www.nilesaudio.com for a complete listing.

FEATURES
Solo-6 MD
6 Source Weather-Resistant Master Keypad with Metadata Display and Built-In Plasma/LCD-Proof IR Sensor

| Model | Stock Number |
|----------|--------------|
| Standard | FG01493 |



Standard Shown

Colors included with standard keypad:

- White
- Light Almond
- Bone

| Model | Stock Number |
|-------|--------------|
| EX | FG01492 |



Export Shown

Colors included with Export Keypad:

- White
- Silver
- Black

Features

- Plug-and-play integration with ZR-6 MultiZone Receiver
- Weather-resistant, single-gang keypad operates in moist indoor/outdoor environments such as patios, spas, and showers
- 2" LCD display provides iPod® and tuner metadata, plus source selection and zone setup information
- Built-in plasma/LCD-proof IR sensor provides trouble-free wireless remote control operation from long distances and wide angles, can be defeated to eliminate interference from direct sunlight for outdoor keypad applications
- Three soft keys change as necessary to control the selected source with One Touch To Music™ and to navigate menus
- One button zone activation for last-used source
- Volume control buttons provide local zone volume control
- Mute button provides local zone mute
- Off button turns local zone off; pressing and holding off button turns entire system off
- 12V trigger interface activates local source input (requires LS-IOP)
- Connects to ZR-6 via T568A terminated CAT-5 cable

Specifications:

- Dimensions: fits 1-gang electrical box

Warranty: Two-year limited
Shipping weight: 1 lb. (.5 Kg)
Solo-6 MD Optional Color Change Kits for Standard Keypad

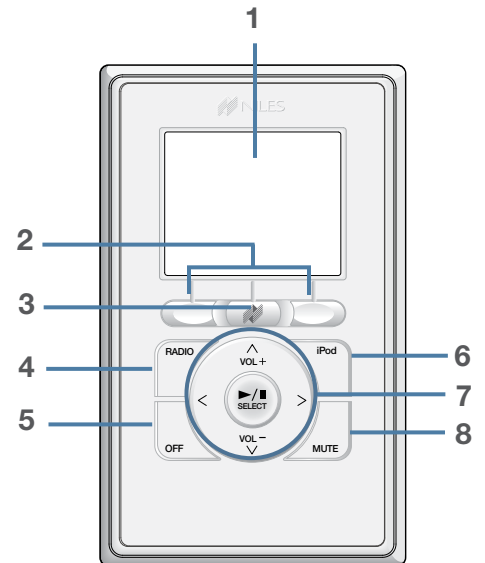
| Color Kit | Stock No. | Description | Unit | Mstr. Crtn. |
|-----------|-----------|---------------------------------------|------|-------------|
| Black | FG01572 | SOL06MD-CK BL Color Change Kit | ea | 6 |

PARTS GUIDE

Solo-6 MD

Front View

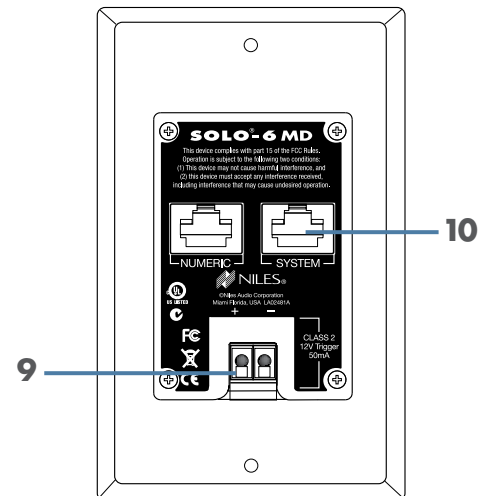
- 1) **LCD Display** Provides source metadata, zone, and keypad information.
- 2) **Soft Keys** The function of these keys appears in the LCD screen above and changes based on the source or menu selected.
- 3) **Niles Key** Press to access the source selection menu. Press-and-hold for three seconds to access the keypad setup menu. Press-and-hold for ten seconds to access the keypad configuration menu. With the Zone off and the keypad backlight off, it selects the last played source.
- 4) **RADIO Key** Provides One Touch To Entertainment™ simplicity for the AM/FM tuner.
- 5) **OFF Key** Press this key to turn the local zone off. Press-and-hold this key for three seconds to turn off all zones.
- 6) **iPod Key** Provides One Touch To Entertainment™ simplicity for the connected iPod.
- 7) **Control Keys** Include Volume Up and Volume Down plus playback functions such as Play, Pause, Previous, and Next.
- 8) **MUTE Key** Mutes the sound in the zone



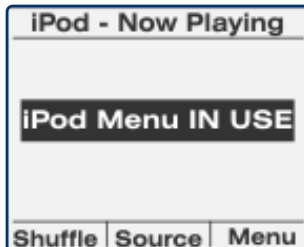
Solo-6 MD

Rear View

- 9) **LS-IOP Control Output** A 12V control output that activates when the keypad is on. Commonly used to trigger the optional LS-IOP Amplified Wallplate (FG01437) on and off.
- 10) **System Port** A RJ-45 jack is used to connect the keypad to the Keypad Port of the ZR-6 MultiZone Receiver.



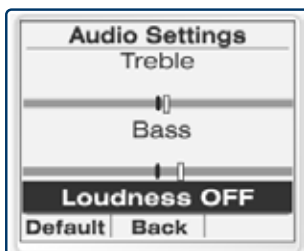
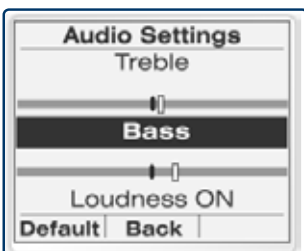
SCREENS



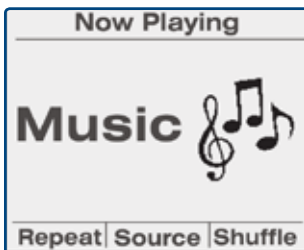
LCD Screen Easy to read LCD screen that makes it easy to navigate your iPod® and other sources from any room in the house



Presets - AM/FM and NOW PLAYING



Audio Settings- Independent Bass, Treble and Variable Loudness



Easy to Read Navigation keys