

**iWARE<sup>®</sup>**  
**SmartDock<sup>®</sup> 2**



*Switching Docking Station for iPod*  
**USER MANUAL**

## CONGRATULATIONS!

Thank you for choosing the iWARE® SmartDock®2 from Niles Audio Corporation. With proper installation and operation, you'll enjoy years of trouble-free use.

The SmartDock2 is a 30-pin docking station for the iPod that includes an adjustable slide to accommodate various iPod sizes. The primary function of the SmartDock2 is to provide a bridge between a receiver such as the IntelliControl® ICS GXR2 or the Niles ZR-6 MultiZone Receiver and an adjacent computer. This configuration allows you to sync with iTunes and instantly switch back to the Niles System without ever having to remove the iPod from the SmartDock2 or disconnect cables.

Niles manufactures the industry's most complete line of custom installation components and accessories for audio/video systems. To see the complete Niles product assortment, visit us on the Internet at [www.nilesaudio.com](http://www.nilesaudio.com).

## KEY FEATURES

- Sync with iTunes at the touch of a button without disconnecting the iPod from the Niles System
- An LED light on the SmartDock2 toggles the dock between Niles System mode and Computer mode
- When the SmartDock2 is connected to the Niles System (Blue illuminated LED) the SmartDock2 is powered from the Niles System.
- A blue illumination on the switch LED indicates Niles System mode
- When the SmartDock2 is in USB mode (Green LED) the iPod charges from the computer's USB power

## PRODUCT OVERVIEW

### Package Contents

- Docking Station
- 2 meter iWARE cable
- 2 meter type A to mini-B standard USB connection cable

### Specifications

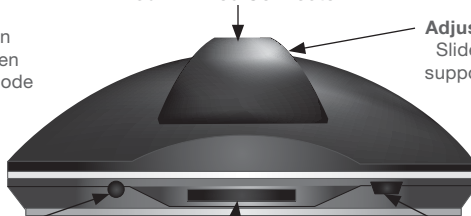
- Power: USB charging
- Dimensions:  
4" W x 1.7" H x 3.7" D  
(10.2 cm W x 4.3 cm H x 9.4 cm D)
- 2-year Limited Warranty



**LED/Toggle Switch**  
Indicates current connection  
mode. Push to toggle between  
computer and Niles System mode

**30-Pin iPod Connector**

**Adjustable iPod Support**  
Slides back and forth to  
support various iPod sizes

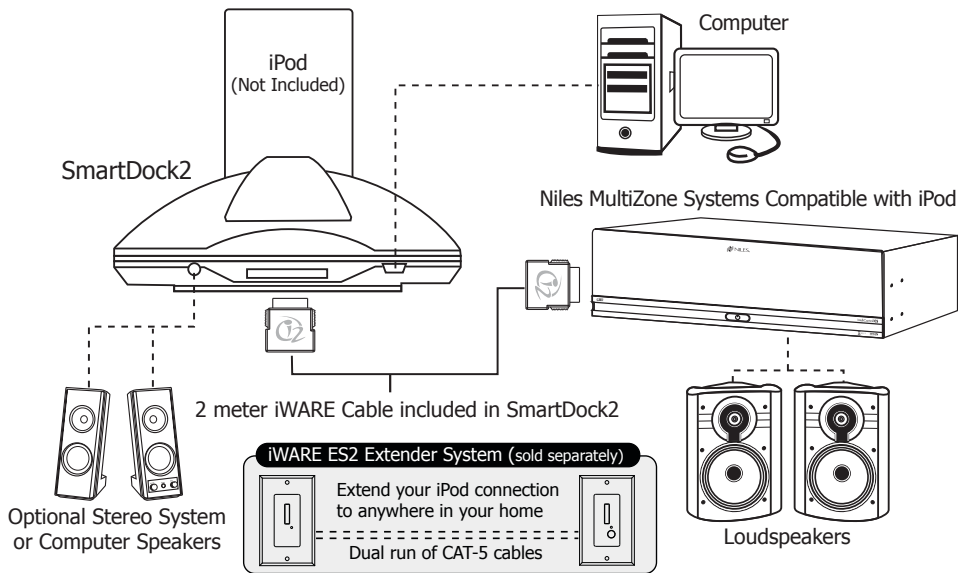


**Stereo Mini to Stereo RCA Plug**  
Connect to the line-level stereo  
input on your receiver or to a pair  
of self-powered speakers

**30-Pin Niles Connector**  
Connects only to a  
Niles System

**USB Power**  
Type B mini USB for connecting to  
your computer with the included cable

# SMARTDOCK 2 CONNECTION DIAGRAM



## Important

The line-level stereo mini jack on the SmartDock2 should not be used in conjunction with the 30-pin output. These two outputs should be regarded as "either-or". To use both at once invites noise and hum on the audio.

30-pin Niles connectors and 30-pin iPod connectors are not interchangeable. Forcing one into the other may damage the connectors.

For the latest iPod model compatibility chart, check the Niles website at [www.nilesaudio.com](http://www.nilesaudio.com)

## USING YOUR SMARTDOCK®2

**WITH A NILES HOME ENTERTAINMENT SYSTEM:** Connect the iWARE SmartDock2 to a Niles System (an IM-iCard 2-equipped IntelliControl® ICS system or a Niles ZR-6 MultiZone Receiver) using the 30-pin Niles to 30-pin Niles cable provided with the SmartDock2. Insert a 30-pin equipped iPod into the docking space on top of the SmartDock2. A blue LED should illuminate. This indicates that the iPod is seated properly and the SmartDock2 is in Niles System mode. If the LED illuminates green, indicating the Computer mode, press the LED to change it back to blue. Adjust the iPod support slide on top of the SmartDock2 to support the back of the connected iPod. The connected Niles System supplies the power to the SmartDock2 and the connected iPod.

If you need to locate the iPod more than 2 meters away from the Niles System, use the **iWARE ES2 Extender System** (sold separately). With the ES2, you can extend the connection range up to 100 meters using a pair of CAT-5 cables. Consult the ES2 manual for instructions.

**WITH A COMPUTER RUNNING iTUNES:** Your SmartDock2 is equipped with a mini USB jack to enable connection to a computer running iTunes. Use the supplied USB cable with a type "B" mini connection on one end and a type "A" standard on the other to connect the SmartDock2 to the computer. While still connected to the Niles System, press the LED on the SmartDock2 and it will change to green. This indicates that the dock and iPod are now in Computer mode and the iPod can now be synced with iTunes. Perform your sync following Apple's instructions. Once complete, press the LED and it will change back to blue, ready to work with your Niles System again.

**WITH A STANDARD STEREO SYSTEM OR POWERED SPEAKERS:** If you do not own an IntelliControl® ICS System or ZR6 MultiZone Receiver you may still use the SmartDock2. Use a 3.5mm stereo mini jack to stereo RCA cable (not supplied) to connect the iPod to an unused line-level input on your stereo system. In addition, the output may also be connected to a pair of powered speakers. To supply charging power to the dock, use the supplied USB cable connected to your computer.

## LIMITED WARRANTY

NILES AUDIO CORPORATION ("NILES") WARRANTS ITS ACTIVE PRODUCTS TO THE ORIGINAL PURCHASER TO BE FREE OF MANUFACTURING DEFECTS IN MATERIAL AND WORKMANSHIP FOR A PERIOD OF TWO YEARS FROM DATE OF PURCHASE.

THIS WARRANTY IS SUBJECT TO THE FOLLOWING ADDITIONAL CONDITIONS AND LIMITATIONS. THE WARRANTY IS VOID AND INAPPLICABLE IF NILES DEEMS THAT THE PRODUCT HAS BEEN USED OR HANDLED OTHER THAN IN ACCORDANCE WITH THE INSTRUCTIONS PROVIDED BY THE MANUFACTURER, INCLUDING BUT NOT LIMITED TO DAMAGE CAUSED BY ACCIDENT, MISHANDLING, IMPROPER INSTALLATION, ABUSE, NEGLIGENCE, OR NORMAL WEAR AND TEAR, OR ANY DEFECT CAUSED BY REPAIR TO THE PRODUCT BY ANYONE OTHER THAN NILES OR AN AUTHORIZED NILES DEALER.

TO OBTAIN WARRANTY SERVICE, TAKE THE UNIT TO THE NEAREST AUTHORIZED NILES DEALER, WHO WILL TEST THE PRODUCT AND IF NECESSARY, FORWARD IT TO NILES FOR SERVICE. IF THERE ARE NO AUTHORIZED NILES DEALERS IN YOUR AREA, YOU MUST WRITE TO NILES AND INCLUDE YOUR NAME, MODEL AND SERIAL NUMBER OF YOUR UNIT, ALONG WITH A BRIEF DESCRIPTION OF THE PROBLEM. A FACTORY RETURN AUTHORIZATION NUMBER WILL BE SENT TO YOU. DO NOT RETURN ANY UNIT WITHOUT FIRST RECEIVING WRITTEN AUTHORIZATION AND SHIPPING INSTRUCTIONS FROM NILES.

IF THE ABOVE CONDITIONS ARE MET, THE PURCHASER'S SOLE REMEDY SHALL BE TO RETURN THE PRODUCT TO NILES, IN WHICH CASE NILES WILL REPAIR OR REPLACE, AT ITS SOLE OPTION, THE DEFECTIVE PRODUCT WITHOUT CHARGE FOR PARTS OR LABOR. NILES WILL RETURN A UNIT REPAIRED OR REPLACED UNDER WARRANTY BY SHIPPING SAME BY ITS USUAL SHIPPING METHOD FROM THE FACTORY (ONLY) AT ITS EXPENSE WITHIN THE UNITED STATES OF AMERICA.

**THERE ARE NO OTHER WARRANTIES, INCLUDING WITHOUT LIMITATION, EITHER EXPRESS OR IMPLIED WARRANTIES OF MERCHANTABILITY OR FITNESS FOR A PARTICULAR PURPOSE, WITH RESPECT TO THE PRODUCT.**

REPAIR OR REPLACEMENT AS PROVIDED UNDER THIS WARRANTY IS THE EXCLUSIVE REMEDY OF THE CONSUMER/PURCHASER. NILES SHALL NOT BE RESPONSIBLE FOR ANY INCIDENTAL OR CONSEQUENTIAL DAMAGES EXCEPT TO THE EXTENT PROVIDED (OR PROHIBITED) BY APPLICABLE LAW.

SOME STATES DO NOT ALLOW THE EXCLUSION OR LIMITATION OF INCIDENTAL OR CONSEQUENTIAL DAMAGES, SO THE ABOVE LIMITATION MAY NOT APPLY TO YOU. THIS WARRANTY GIVES YOU SPECIFIC LEGAL RIGHTS, AND YOU MAY ALSO HAVE OTHER RIGHTS WHICH VARY FROM STATE TO STATE.

FOR THE NAME OF YOUR NEAREST AUTHORIZED NILES DEALER CONTACT:  
NILES AUDIO CORPORATION, P.O. BOX 160818, MIAMI, FLORIDA 33116-0818.

Please fill in your product information and retain for your records.

Model SmartDock2 Serial No. \_\_\_\_\_ Purchase Date \_\_\_\_\_

# SmartDock®2 User Manual

Model Purchased SmartDock2 Serial Number \_\_\_\_\_

Date Purchased \_\_\_\_\_ Dealer Name and Location \_\_\_\_\_

Dr.  Miss  Mr.  Mrs.  Ms.

Name \_\_\_\_\_ Address \_\_\_\_\_

City \_\_\_\_\_ State \_\_\_\_\_ Zip \_\_\_\_\_ Tel (    ) \_\_\_\_\_

Please take a moment to fill out our warranty registration card. The information helps us to get to know you better and develop the products you want

## Age:

- Under 25
- 25-34
- 35-44
- 45-54
- 55 & over

## Income:

- Under \$24,999
- \$25,000-\$44,999
- \$45,000-\$74,999
- \$75,000-\$99,999
- \$99,999-\$129,999
- Over \$130,000

## Occupation:

- Arts/Entertainment
- Business Owner
- Engineer
- Finance/Accounting
- General Office
- Management
- Professional
- Sales/Marketing
- Student
- Tradesperson

## Musical tastes:

(Please check all that apply)

- Alternative
- Classical
- Country
- Jazz
- New Age
- Popular
- R&B
- Rock
- Other \_\_\_\_\_

## How did you hear about Niles?

- Architect/Developer
- Custom Installer
- Direct Mail
- Friend/Family
- In-Store Display
- Interior Designer
- Magazine Ad
- Mail-Order Catalog
- Newspaper Ad
- Product Brochure
- Product Review
- Retail Salesperson
- E-Tailer

## What magazines do you read?

1. \_\_\_\_\_
2. \_\_\_\_\_
3. \_\_\_\_\_

## Who will install the product?

- Custom Installer
- Electrician
- Friend
- Myself
- Builder

## Which factor(s) influenced the purchase of your Niles product? (Please check all that apply)

- Ease of Use
- Price/Value
- Product Features
- Quality/Durability
- Reputation/Brand
- Style/Appearance
- Warranty

## Do you . . . ?

- Own a House. If yes, how many square feet? \_\_\_\_\_
- Own a Town House/Condominium/Co-op
- Rent an Apartment
- Rent a House

## Are you interested in receiving literature on other Niles products?

- Yes  No

## Are there products/capabilities that you would like to see introduced?

\_\_\_\_\_

\_\_\_\_\_

\_\_\_\_\_

\_\_\_\_\_

\_\_\_\_\_

# CUSTOMER SERVICE AND TECHNICAL SUPPORT

---

## **BY PHONE (IN USA AND CANADA)**

1-800-BUY-HIFI (289-4434)

---

## **BY PHONE (ALL OTHER COUNTRIES)**

1-305-238-4373

---

## **CUSTOMER SERVICE HOURS**

8:00 AM to 5:30 PM ET

---

## **TECHNICAL SUPPORT HOURS**

8:00 AM to 7:00 PM ET

---

## **ON THE WEB**

[www.nilesaudio.com](http://www.nilesaudio.com)

---

## **EMAIL TECHNICAL SUPPORT**

[techsupport@nilesaudio.com](mailto:techsupport@nilesaudio.com)

---

## **EMAIL FOR PRODUCT SUGGESTIONS**

[productsuggestions@nilesaudio.com](mailto:productsuggestions@nilesaudio.com)

---

©2009 Niles Audio Corporation 12331 S.W. 130 Street, Miami, FL 33186. All rights reserved. Niles, the Niles logo, iWARE, the iWARE logo, and SmartDock are registered trademarks of Niles Audio Corporation. All other trademarks are the property of their respective owners. Niles reserves the right to change specifications, descriptions and prices without notice. The technical and other information contained herein is not intended to set forth all technical and other specifications. Designed and engineered in the USA. DS00676C

E N G I N E E R E D   B Y

