

IntelliControl<sup>®</sup>ICS  
INTEGRATED CONTROL SOLUTIONS

QUICK INSTALL GUIDE

---

iREMOTE<sup>®</sup> TS

---

2-WAY WIRELESS RF/IR SYSTEM  
CONTROL REMOTE WITH  
COLOR TOUCHSCREEN

ENGINEERED BY



# IntelliControl<sup>®</sup> ICS

INTEGRATED CONTROL SOLUTIONS

The IntelliControl<sup>®</sup> ICS iRemoteTS is a wireless touch screen user interface that brings multizone audio/video and home theater automation together at last. Essentially two remotes in one, the iRemoteTS integrates and controls the IntelliControl ICS MultiZone audio/video system when the HOUSE button is pressed, and a home theater system via IR or direct RF communication using the Niles HT-MSU when the THEATER button is pressed. When integrated with the IntelliControl ICS Modular MultiZone Receiver, the iRemoteTS features reliable ZigBee<sup>®</sup> wireless 2-way technology and displays metadata to navigate menu-based sources.

# Table of Contents

<b>Product Overview</b> .....	2
<b>Features and Benefits</b> .....	3
<b>Getting Started</b> .....	5
<b>iRemoteTS House Mode: System Design Considerations</b> .....	9
<b>iRemoteTS House Mode: Installation Procedure</b> .....	12
<b>iRemoteTS Theater Mode: System Design Considerations</b> .....	15
<b>iRemoteTS Theater Mode: Installation Procedure</b> .....	18
<b>Operating the iRemoteTS</b> .....	19
<b>Troubleshooting</b> .....	21
<b>Specifications</b> .....	23
<b>FCC Compliance Regulations</b> .....	24
<b>Contact Information</b> .....	25
<b>Warranty</b> .....	26

# PRODUCT OVERVIEW

## Touch Screen

High-resolution touch screen that displays control screens for the home theater or MultiZone system and sources

## IR Flasher

Infrared codes are issued when the iRemoteTS is configured to control home theater sources via IR by IntelliFile® 3 Configuration Software

## Mode Select, Niles Logo, and System Off Buttons

The Mode Select buttons switch between home theater or MultiZone system control. The Niles Logo button selects the zone of the MultiZone system plus system settings

## Function Keys

Hard buttons that control home theater and MultiZone sources

## Charging Contacts

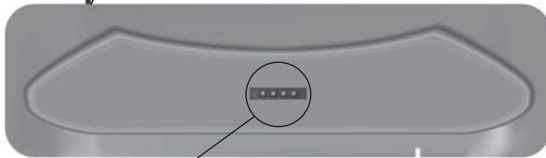
Allow the battery to be charged when the iRemoteTS is placed in the charging base



**12V DC Power Supply**

## Power Supply Connection

The supplied charging power supply connects to this barrel connector



**Charging Base**

## Charging Base Contacts

These pogo style contacts provide the connection point when the iRemoteTS is placed in the charging base

**Charging Indication LED** – Lights up when the iRemoteTS is placed in the charging base and turns off when the battery is fully charged

**Figure 1.** IntelliControl ICS iRemoteTS

## FEATURES AND BENEFITS

### **House and Theater Operating Modes**

The iRemoteTS has two operating modes: House and Theater. When the House button is pressed, the iRemoteTS becomes a “wireless” Contact System Control Touchscreen that controls any zone of an IntelliControl ICS distributed audio/video system. The LCD display shows the same screens and metadata as a Contact System Control Touchscreen. When the Theater button is pressed, the iRemoteTS changes identity and provides the user with up to 12 Master Keys and Control Screens to operate a complete home theater system.

### **High-Resolution Color Touch Screen Display with LED Backlighting**

The LCD touch screen display provides complete metadata from IntelliControl ICS sources, zone/system status, favorite-station icons for theater sources, control functions, and system setup menus.

### **Metadata, Preset Favorites and Menus**

Metadata (channel frequency, favorite channel lists, menus and guides) is displayed as provided by IntelliControl ICS integration and tuner modules. IntelliControl ICS Modular MultiZone Receiver system setup settings can be displayed for adjustments of tone controls, clocks, timers and other system functions.

### **Predefined Control Screens**

The iRemoteTS has control screens for all sources. The control screens for the House and Theater sides are predefined by the source. During IntelliFile3 setup, the sources are identified and the control screens are automatically configured and then loaded into the iRemoteTS.

## FEATURES AND BENEFITS (CONT'D)

### **Radio Frequency (RF) or Infrared (IR) Home Theater Control**

The iRemoteTS can operate a home theater via line-of-sight IR, or via RF when integrated with the Niles HT-MSU Home Theater Main System Unit. The iRemoteTS/ HT-MSU combination provides complete automation and control of home theater components using IR, RS-232, voltage triggers, or contact closures.

### **18 Backlit Hard Keys**

Backlit buttons offer convenient access to frequently used commands including: House or Theater modes, system off, channel up/down, volume up/down, mute, menu navigation, and the Niles logo button to access remote and system settings.

### **Convenient Backlighting for All Keys**

All keys automatically illuminate when any button is pressed, or when the iRemoteTS is picked-up.

### **Rechargeable Lithium Ion Battery**

The iRemoteTS utilizes a rechargeable Lithium Ion battery to eliminate the need for replacing store-bought batteries. The iRemoteTS will operate between 24 and 48 hours on a full charge.

# GETTING STARTED

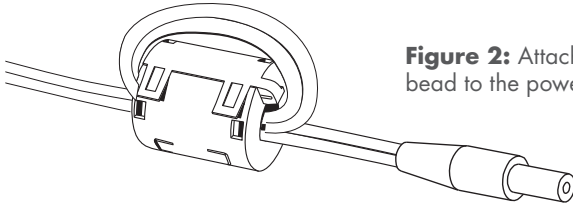
## **Unpacking the Box (Contents)**

- 1, iRemoteTS Touchscreen Control
- 1, Lithium Ion Battery
- 1, Charging Base Cradle
- 1, 12V Power Supply
- 1, User Guide
- 1, Quick Install Guide
- 1, Ferrite Bead for Power Supply

## GETTING STARTED (CONT'D)

### Connecting the Battery and Setting Up the Charging Base

1. Unpack the iRemoteTS, charging base cradle and power supply
2. Attach the ferrite bead to the power supply (See **Figure 2**)



**Figure 2:** Attaching the ferrite bead to the power supply cable

3. The battery is installed inside the iRemoteTS, but not connected. Unscrew the battery compartment door and carefully inspect the battery for any visible signs of damage to its soft shell case. If damage is found or if the battery is dropped, it should be replaced. Contact Niles Customer Service for a replacement. If no damage is found, connect the battery (See **Figure 3**)



**Figure 3:** Connecting the iRemoteTS Battery

4. Plug the 12V power supply into the iRemoteTS charging base cradle and connect to an unswitched AC outlet
5. Set the iRemoteTS into the charging base cradle and let it charge until the charging LED turns off (See **Figure 4**)



**Figure 4:** The iRemoteTS in the Charging Base Cradle

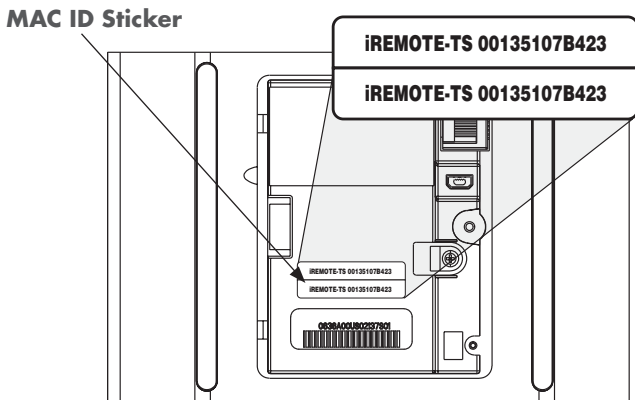
## GETTING STARTED (CONT'D)

### Charging the Battery

The iRemoteTS uses a rechargeable Lithium Ion battery that may be partially charged when the box is unpacked. However, it is recommended to fully charge the battery prior to initial use. Connect the battery and allow it to charge for 4 to 5 hours for a full charge. When battery is charging, the LED will illuminate white. When the charging is complete, the LED will go out. The iRemoteTS will operate for up to a maximum of 48 hours on a full charge, or as little as 24 hours, depending on usage.

### Locating the MAC ID

The Media Access Control Address (MAC ID) tells the IntelliControl ICS Modular MultiZone Receiver which device, in this case an iRemoteTS, is sending commands. The IntelliControl ICS Modular MultiZone Receiver then knows which zone to turn on and which source to select for that zone. The MAC Address is located under the battery inside the battery compartment. (See **Figure 5**).



**Figure 5.** MAC ID Sticker Location

## GETTING STARTED (CONT'D)

### **Documenting the MAC ID**

The GXR2 Installation Worksheet, included with the IntelliControl ICS Modular MultiZone Receiver (and available for download at [www.nilesaudio.com](http://www.nilesaudio.com)), provides spaces for placing the MAC ID stickers next to the name of the zone they are located in. Two MAC ID stickers are found inside the iRemoteTS battery compartment. Remove one of the stickers and place in the appropriate area on the GXR2 Installation Worksheet. **DO NOT REMOVE BOTH STICKERS FROM THE iRemoteTS.** It may become necessary to reference the iRemoteTS MAC ID sticker for troubleshooting if the system is not performing properly.

**NOTE:** Once the Getting Started steps are finished, the iRemoteTS will be ready to be configured to control an IntelliControl ICS Modular MultiZone Receiver, a home theater system, or both. If the iRemoteTS is to be configured for both, first configure for the IntelliControl ICS Modular MultiZone Receiver, and then configure it for the home theater system.

## iREMOTETS HOUSE MODE: SYSTEM DESIGN CONSIDERATIONS

### ZigBee® RF Mesh Network

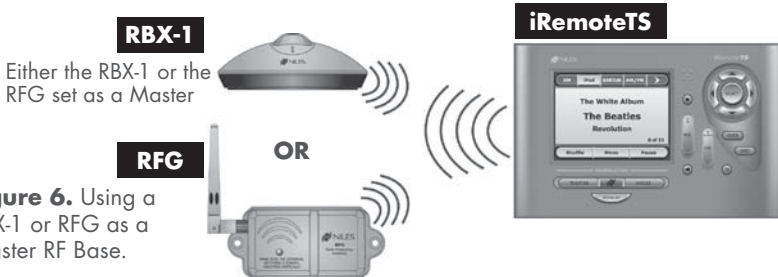
When the House button is pressed, the iRemoteTS becomes a control solution for the IntelliControl ICS Modular MultiZone Receiver. It displays the same information and metadata as a Contact System Control Touchscreen. The main difference is that the Contact is wired, while the iRemoteTS is wireless and communicates via radio frequency (RF). Therefore, integrating an iRemoteTS with an IntelliControl ICS Modular MultiZone Receiver requires a ZigBee® RF Mesh Network.

### Selecting a Master-Receiving Base

A ZigBee RF Mesh Network requires a RF transmitter, a master-receiving base connected to the IntelliControl ICS Modular MultiZone Receiver, and, if the coverage area is particularly large, additional RF repeaters. The iRemoteTS is an RF transmitter and the charging base doesn't have a RF base built-in, therefore it requires at least one master-receiving base connected to the IntelliControl ICS Modular MultiZone Receiver. The master-receiving base can be any of the following: (See **Figure 6**)

- 1) IntelliControl ICS RBX-1 iRemote Charging Base (FG01269) or (FG01364) for Export use
- 2) IntelliControl ICS iRemote 2-Way Wireless RF System Control Remote (FG01180) or (FG01362) for Export configured as a master-receiver
- 3) Niles RFG Radio Frequency Gateway (FG01407) or (FG01408) for Export

These products are configured either as master-receiving bases or as repeating bases using Niles IntelliFile®3 Configuration Software.

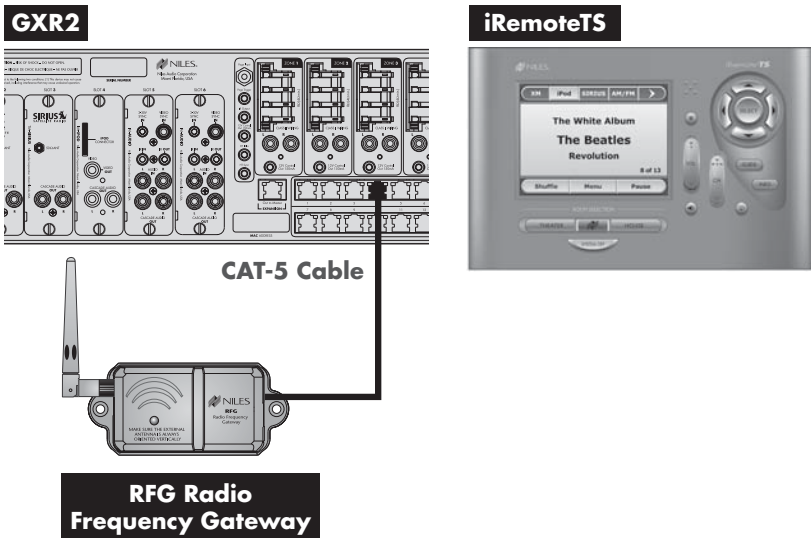


**Figure 6.** Using a RBX-1 or RFG as a Master RF Base.

# iREMOTETS HOUSE MODE: SYSTEM DESIGN CONSIDERATIONS (CONT'D)

## Integrating a Master-Receiving Base

The master-receiving base for the iRemoteTS is wired to the IntelliControl ICS Modular MultiZone Receiver using CAT-5 cabling (See **Figure 7**). When connected and configured as a master-receiving base, the Niles RFG does not require a power supply. However, when connected and configured as a master-receiving base, the IntelliControl ICS RBX-1 needs its supplied power supply connected because it is also the charging base for the iRemote. (Please note that the RBX-1 only charges the iRemote and not the iRemoteTS). For more information, refer to the installation manuals for the Niles RFG and IntelliControl ICS RBX-1.



**Figure 7.** iRemoteTS Communicating through a Master-Receiving Base

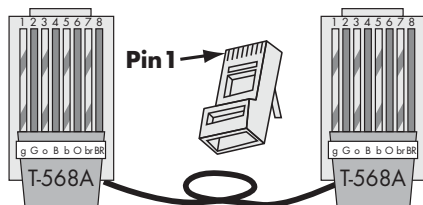
## iREMOTETS HOUSE MODE: SYSTEM DESIGN CONSIDERATIONS (CONT'D)

### Locating the iRemoteTS

The iRemoteTS consists of three parts: the handheld remote, the charging base, and an inline power supply that is connected to the charging base. When in the House mode, the handheld remote can be carried throughout the house. When not in use, it should be placed back in the charging base. The charging base requires a nearby un-switched AC power outlet. Since the handheld remote is fully operational while in the charging base, we recommend that you locate the iRemoteTS in a place where the touch screen is visible and can be used.

### Wiring Termination Diagram

The CAT-5 cable used to connect the Master Charging Base to the IntelliControl ICS Modular MultiZone Receiver must be terminated with RJ-45 connectors using the T-568A pinout configuration as follows:



Pin #	Description	Color Code
1	TX+	White/Green
2	TX-	Green
3	RX+	White/Orange
4	IR Signal	Blue
5	IR Ground	White/Blue
6	RX-	Orange
7	UI Power	White/Brown
8	UI Ground	Brown

Note: TX+ = transmit, RX+ = receive, UI = User Interface.

**Figure 8.** IntelliControl ICS RJ-45 Pinout and checklist

# iREMOTETS HOUSE MODE: INSTALLATION PROCEDURE

After the Getting Started steps are done (Connecting the Battery, Hooking Up the Charging Base, and Locating and Documenting the MAC ID), the next step is to program the iRemoteTS for use with the IntelliControl ICS Modular MultiZone Receiver.

Programming the iRemoteTS is accomplished by connecting it to an IntelliControl Modular MultiZone Receiver for discovery, and then configuring it as a part of the MultiZone System using IntelliFile 3 Configuration Software. On the IntelliFile 3 Main Screen, configuration is accomplished by clicking CREATE NEW under the MULTIZONE CONFIGURATION section.

## Connecting an iRemoteTS to an IntelliControl ICS Modular MultiZone Receiver for Discovery

During the programming process, the iRemoteTS is connected to an IntelliControl ICS Modular MultiZone Receiver with a CAT-5 cable terminated with the T-568A wiring connection (See **Figure 8, on Page 11**). One end of the CAT-5 cable is connected to one of the IntelliControl ICS Modular MultiZone Receiver's Communication & Control Switch RJ-45 ports, and the other end to the iRemoteTS's RJ-45 connection port located under the battery cover (See **Figure 9**). Once the CAT-5 cable is connected to the iRemoteTS' RJ-45 port, the iRemoteTS is put into Update Mode and can be configured by the IntelliFile 3 Configuration Software.



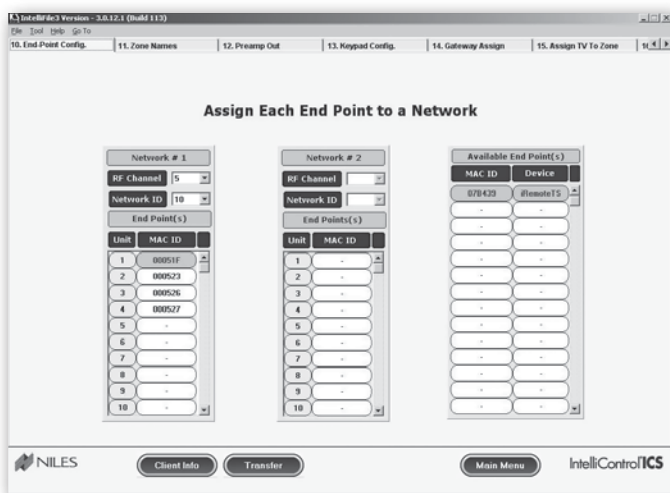
**Figure 9.** Location of the RJ-45 Connection Port under the Battery Cover

## iREMOTETS HOUSE MODE: INSTALLATION PROCEDURE (CONT'D)

### Configuring the iRemoteTS as part of the IntelliControl ICS RF Network

An IntelliControl ICS system and all of its components are discovered and configured using the IntelliFile 3 Configuration Software. The IntelliFile 3 Configuration Software is wizard-based and steps you through the configuration process.

The iRemoteTS is first assigned to an RF network. During IntelliFile 3 configuration, if only one network is configured, the iRemoteTS will automatically be assigned to that network. If two RF networks are configured, each iRemoteTS in the system configuration must be assigned to one of the two RF networks. (See **Figure 10**)

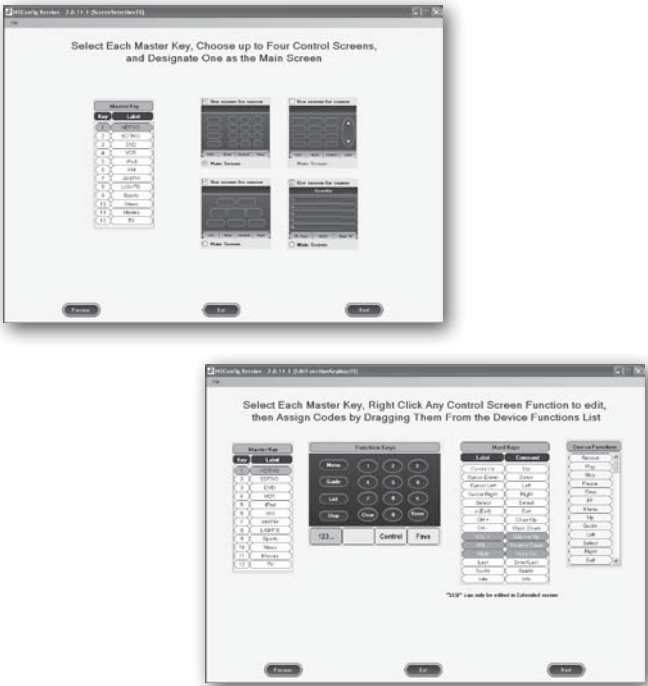


**Figure 10.** Assigning the iRemoteTS to an RF Network using IntelliFile 3

# iREMOTETS HOUSE MODE: INSTALLATION PROCEDURE (CONT'D)

## Configuring the iRemoteTS as part of the IntelliControl ICS RF Network (Cont'd)

The iRemoteTS can have its source screens customized. The iRemoteTS, when used with an IntelliControl ICS Modular MultiZone System, is essentially a wireless Contact Control Touchscreen. The iRemoteTS and Contact share virtually all of the same screens. However, because the iRemoteTS has more hard buttons than the Contact, there is one screen per source that is different and can be customized. IntelliFile 3 will step you through the iRemoteTS Touchscreen configuration. (See **Figure 11**)



**Figure 11.** Assigning Source Screens to the iRemoteTS using IntelliFile 3

## iREMOTETS THEATER MODE: SYSTEM DESIGN CONSIDERATIONS

When the Theater button is pressed, the iRemoteTS becomes a wireless controller for a home theater system. The user is presented with up to 12 Master keys (sources or activities) configured to operate and automate the system. The iRemoteTS can control a home theater system in two different ways:

- 1) Line-of-sight infrared (IR) emitted from the front of the iRemoteTS
- 2) Radio Frequency (RF) when integrated with the Niles HT-MSU

When integrated with the Niles HT-MSU (FG01343), the iRemoteTS becomes a powerful control interface for automating home theater sources and devices. The iRemoteTS/HT-MSU combination controls home theater sources and devices via IR, RS-232, 12-volt trigger, and contact closure. The iRemoteTS/HT-MSU combination also makes it possible to share the sources with the IntelliControl ICS Modular MultiZone Receiver.

### **Controlling Home Theater with IR**

For IR control of a home theater system, the installer must make sure that the iRemoteTS can “see” the front of the sources in the home theater system—infrared is a line-of-sight operation. Sources that have separate on and off power commands, as well as direct access commands for input selection or surround modes, are highly desired when controlling a theater system via IR. The iRemoteTS has up to 12 Master Keys for home theater turn-on and set-up. However, IR has no feedback capability to tell the remote which devices are already on. As long as the iRemoteTS is used to turn on and off the system, it will keep track of issuing power commands for the sources in the home theater. IntelliFile3 Configuration Software is used to program the iRemoteTS for IR operation.

## iREMOTETS THEATER MODE: SYSTEM DESIGN CONSIDERATIONS (CONT'D)

### **Controlling Home Theater with RF using the Niles HT-MSU**

The iRemoteTS communicates to the HT-MSU via radio frequency (RF). The iRemoteTS has the RF transmitter built into it and the Niles HT-MSU has the RF master-receiving base built into it. IntelliFile 3 software is used to configure both the Niles HT-MSU and the IntelliControl ICS iRemoteTS. When configured, the iRemoteTS will send commands via RF to the HT-MSU. The HT-MSU will then send IR or RS-232 commands to the home theater system sources. The HT-MSU also has advanced control capabilities such as RS-232 control of sources in conjunction with voltage triggers and contact closures that can automate mechanical devices in the home theater system such as lighting, drapery, lifts, and projection screens.

### **Controlling Home Theater with Both IR and RF**

The iRemoteTS can be configured to send both RF commands to the Niles HT-MSU and IR commands to sources without control cables from the HT-MSU. An example would be a flat panel television hung above a fireplace. It can be very difficult to run an IR flasher or RS-232 cable from the HT-MSU for this type of installation. In this example, the iRemoteTS would send IR commands to the flat panel TV, and RF commands via the HT-MSU to everything else. IntelliFile3 software is used to configure the combination of IR and RF that is desired.

### **Installation Considerations with the HT-MSU**

When installing the iRemoteTS as a home theater controller, the main consideration is whether or not you will be using the Niles HT-MSU Home Theater Main System Unit. If you are installing the iRemoteTS with the Niles HT-MSU, please refer to the HT-MSU installation guide for more system design ideas and requirements.

## iREMOTETS THEATER MODE: SYSTEM DESIGN CONSIDERATIONS (CONT'D)

### **Installation Considerations without the HT-MSU**

If you are using the iRemoteTS to control the home theater system via IR control without the Niles HT-MSU, care in the system design and source capabilities must be taken. The iRemoteTS will issue IR control commands and sequences of IR commands to control the sources in the home theater. However, the iRemoteTS must have an unobstructed view to the sources. If any of the source IR sensor windows are hidden from the line of sight, they may only receive partial commands and get out of sync.

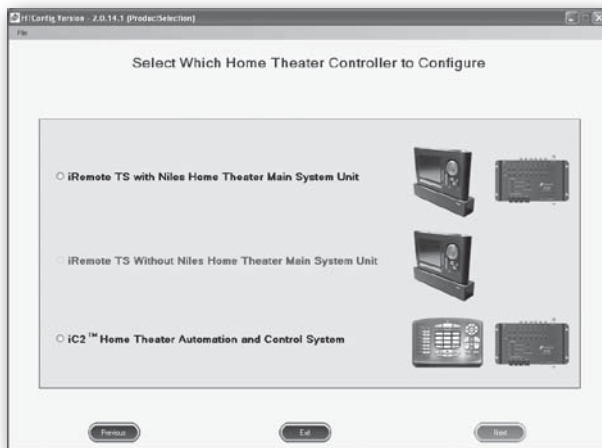
Suggestions for best results:

- 1) The iRemoteTS must be the only device controlling the home theater sources
- 2) Sources should have separate power on and off commands as well as unique codes for input and surround selection

## iREMOTETS THEATER MODE: INSTALLATION PROCEDURE

After the Getting Started steps are done (Connecting the Battery, Hooking Up the Charging Base, and Locating and Documenting the MAC ID), the next step in the installation of the iRemoteTS for use with the Niles HT-MSU is to program it.

IntelliFile3 is used to configure the iRemoteTS to control a home theater system by clicking on the CREATE NEW in the HOME THEATER CONFIGURATION section of the main screen. After inputting the customer information, the next screen of the software will prompt you to select if you are configuring the iRemoteTS with or without the Niles HT-MSU (See **Figure 12**). The IntelliFile 3 wizard then prompts you with the information needed to configure the iRemoteTS to control the home theater system. When done, IntelliFile 3 transfers the configuration to the iRemoteTS. To do this, a CAT-5 cable needs to be connected from the computer's Ethernet connection to the RJ-45 connection under the battery cover of the iRemoteTS.



**Figure 12.** Configuring the iRemoteTS with or without the Niles HT-MSU using IntelliFile 3

## OPERATING THE iREMOTETS

### **Charging the iRemoteTS**

The iRemoteTS uses a lithium ion rechargeable battery and should always be placed in the charging base when not in use. A full charge will last approximately 24–48 hours. When the battery is low, the touch screen will display: “Battery Low, Please Place in Charger.” When the iRemoteTS is placed in the charging base, an LED illuminates white to indicate that it is properly placed in the base and the battery is charging. After the iRemoteTS has been fully charged the charging LED on the base will go out. If the LED doesn’t light up, the remote has not been placed into the base properly. If the LED illuminates red, there is a fault in the battery and it should be replaced. Contact Niles Technical Support for information on battery replacement.

The iRemoteTS will go into a sleep mode when not in use. This helps to conserve the battery. Picking up the iRemoteTS or pressing any hard button will wake up the iRemoteTS. This sleep mode is configurable in the iRemote System Settings Menu.

**When leaving the iRemoteTS unused for long period of time (such as when used in a vacation home) it is best to leave the iRemoteTS in its charging base and the charging base plugged in.**

### **Selecting Theater or House Control**

Once awake, press the House button to control the MultiZone system, or the Theater button to control the home theater. When the Theater button is pressed, you can see up to 12 Master Keys, each labeled for home theater sources or activities. The number of Master Keys seen is dictated by the configuration programmed by IntelliFile3.

When the House button is pressed, the iRemoteTS shows the status of the zone of the iRemoteTS that was last left on. To select a different zone, press the Niles logo button. A list of available zones will be shown. Select a new zone by pressing the zone name on the touch screen. If the newly selected zone is turned off, the IntelliControl ICS splash screen will be displayed with the labeled Master Keys across the top. If the newly selected zone is already on, the currently selected source for that zone will be displayed.

# OPERATING THE iREMOTETS

(CONT'D)

## Adjustment to the iRemoteTS

The iRemoteTS has multiple features that can be adjusted. They are grouped into three categories.

### 1) Theater Setting Adjustments

When the iRemoteTS is in Theater mode, adjustments can be made by the installer or the user. These adjustments include setting the clock and resetting the splash screen. While in Theater mode press the Niles Logo button (See **Figure 13**) for 3 seconds to access this adjustment screen.

### 2) House Setting Adjustments

When the iRemoteTS is in House mode, adjustments can be made to the Modular MultiZone Receiver's clock, alarm, audio page/doorbell and sleep timer. These adjustments are available to the installer or user. While in House mode press the Niles Logo button for 3 seconds to access this adjustment screen.

### 3) Installer Adjustments

Installer adjustments are features that change how the IntelliControl ICS system operates and looks to the user. Adjustments include hiding features from the user, source level adjustments, maximum volume for individual zones and system information such as MAC ID and firmware revision documentation. While in House mode press and hold the Niles Logo button for 15 seconds to access this adjustment screen.



**Figure 13.** Niles logo accesses zone and system settings

# TROUBLESHOOTING

## PROBLEM

## SOLUTION

### CONTROL

iRemoteTS does not control IntelliControl ICS Modular MultiZone Receiver or sources

- a) Confirm that a Master RF Base is connected to MultiZone Receiver
- b) Verify MAC ID number for THIS iRemoteTS is properly configured in IntelliFile 3
- c) Confirm Modules are in proper card slots in MultiZone Receiver card cage (Check GXR2 Installation Worksheet)
- d) Check Module connection to ensure that Modules are seated correctly in card cage
- e) Verify IR commands in IntelliFile 3 for Legacy Sources, if used
- f) Confirm that an IR Flasher is plugged into the IR OUT jack
- g) Confirm that placement of IR Flasher is over the IR eye of the component being controlled
- h) Check connection between IR OUT of Slave Chassis and IR IN on Master Chassis in an Expanded System

# TROUBLESHOOTING (CONT'D)

## PROBLEM

## SOLUTION

---

### CONTROL

---

iRemoteTS does not control home theater sources connected to the Niles HT-MSU Home Theater Main System Unit

- a) Confirm that the Niles HT-MSU is plugged in for power
- b) Confirm that the Niles HT-MSU is configured for use with the iRemoteTS by using IntelliFile 3
- c) Confirm that placement of IR Flasher is over the IR eye of the component being controlled

---

iRemoteTS does not control home theater sources via infrared control

- a) Confirm that the iRemoteTS can "see" the sources to be controlled
- b) Confirm that the iRemoteTS is configured for control of all the home theater sources by using IntelliFile 3

## ACCESSORIES

Niles Audio Corporation manufactures the following accessories for use with the iRemoteTS.

RFG	Radio Frequency Gateway (North America)	FG01407
RFG EX	Radio Frequency Gateway (International)	FG01408
RBX1	Charging and Repeating Base (North America)	FG01269
RBX1 EX	Charging and Repeating Base (International)	FG01364

For a complete list of products please visit: [www.nilesaudio.com](http://www.nilesaudio.com).

## SPECIFICATIONS

<b>Agency certifications:</b>	FCC Part 15
<b>Display:</b>	3.5" High Resolution color LCD with LED backlighting
<b>Warranty:</b>	Two-year limited
<b>Shipping Weight:</b>	3.3 lbs. 1.5 Kg

## DIMENSIONS

<b>iRemoteTS:</b>	5.4" w x 6.2" h x 1.25" d 13.72cm w x 15.75cm h x 3.18cm d
<b>Charging Base:</b>	7.06" w x 1.2" h x 1.96" d 17.93cm w x 3.05cm h x 4.98cm d

# FCC COMPLIANCE REGULATIONS

## **Compliance Statement (Part 15, 19)**

This device complies with Part 15 of the FCC Rules.

Operation is subject to the following two conditions:

1. This device may not cause harmful interference, and
2. This device must accept any interference received, including interference that may cause undesired operation.

## **Warning (Part 15.21)**

Changes or modifications not expressly approved by the party responsible for compliance could void the user's authority to operate the equipment.

## **FCC Interference Statement (Part 15.105 (b))**

This equipment has been tested and found to comply with the limits for a Class B digital device, pursuant to Part 15 of the FCC Rules. These limits are designed to provide reasonable protection against harmful interference in a residential installation. This equipment generates, uses, and can radiate radio frequency energy and, if not installed and used in accordance with the instructions, may cause harmful interference to radio communications. However, there is no guarantee that interference will not occur in a particular installation. If this equipment does cause harmful interference to radio or television reception, which can be determined by turning the equipment off and on, the user is encouraged to try to correct the interference by one of the following measures:

- Reorient or relocate the receiving antenna.
- Increase the separation between the equipment and receiver.
- Connect the equipment into an outlet on a circuit different from that to which the receiver is connected.
- Consult the dealer or an experienced radio/TV technician for help.

# FCC COMPLIANCE REGULATIONS (CONT'D)

## **Industry Canada Compliance - Section 7.1.5 of RSS-GEN**

Operation is subject to the following two conditions:

- 1) this device may not cause interference, and
- 2) this device must accept any interference, including interference that may cause undesired operation of the device.

# LIMITED WARRANTY

Niles Audio Corporation ("NILES") warrants to the original retail purchaser only that this product will be free of manufacturing defects in material and workmanship for the following periods and subject to the limitations and exclusions set forth below:

Lifetime Warranty

All Passive Loudspeaker Products (those not requiring AC or battery power).

Ten years from the date of purchase

All Other Passive Products (those not requiring AC or battery power).

Two years from the date of purchase

All Active Products (those requiring AC or battery power).

This warranty is not transferable to subsequent purchasers of the product. To obtain warranty service, contact the authorized dealer where you purchased your product or take the unit to the nearest authorized NILES dealer (with proof of purchase – claims made without proof of purchase will be denied) who will test the product and if necessary, forward it to NILES for service. If there are no authorized NILES dealers in your area, you must contact NILES to receive a factory Return Authorization Number. **DO NOT RETURN ANY UNIT WITHOUT FIRST RECEIVING WRITTEN AUTHORIZATION AND SHIPPING INSTRUCTIONS FROM NILES.**

Upon examination, NILES will, at its sole option and expense, repair or replace any product found to be defective. NILES will return the repaired or replaced unit to you via its usual shipping method from the factory to your address in the United States of America or Canada only. Any shipping costs for addresses outside of the United States or Canada shall be the responsibility of the purchaser. In the event that this model is no longer available and cannot be repaired effectively, NILES, at its sole option, may replace it with a different model of equal or greater value, or refund the original purchase price paid. **THE FOREGOING ARE YOUR EXCLUSIVE REMEDIES FOR BREACH OF WARRANTY.**

This Warranty does not include service or parts to repair damage caused by improper use or handling, including but not limited to damage caused by accident, mishandling, improper installation, commercial use, abuse, negligence, or normal wear and tear, or any defect caused by repair to the product by anyone other than NILES.

This warranty does not cover reimbursement for your costs of removing and transporting the product for warranty service evaluation, or installation of any replacement product provided under this warranty.

This Warranty will be void if:

- the Serial Number on the product has been removed, tampered with or defaced.
- the product was not purchased from an authorized dealer or reseller.

**THE FOREGOING WARRANTIES ARE EXCLUSIVE AND IN LIEU OF ALL OTHER EXPRESSED AND IMPLIED WARRANTIES. NILES EXPRESSLY DISCLAIMS ALL SUCH OTHER WARRANTIES, INCLUDING BUT NOT LIMITED TO IMPLIED WARRANTIES OF MERCHANTABILITY, FITNESS FOR A PARTICULAR PURPOSE AND NON-INFRINGEMENT, WITH RESPECT TO THE PRODUCT. TO THE MAXIMUM EXTENT PERMITTED BY LAW, NILES SHALL NOT BE RESPONSIBLE FOR ANY INCIDENTAL OR CONSEQUENTIAL DAMAGES EXCEPT TO THE EXTENT PROVIDED (OR PROHIBITED) BY APPLICABLE LAW, EVEN IF NILES HAS BEEN ADVISED OF THE POSSIBILITY OF SUCH DAMAGES.**

Notwithstanding the above, if you qualify as a "consumer" under the Magnuson-Moss Warranty Act, or applicable state laws, then you may be entitled to any implied warranties allowed by law for the Warranty Period. Further, some states do not allow limitations on how long an implied warranty lasts or allow the exclusion or limitation of consequential damages, so such limitations may not apply to you. This warranty gives you specific legal rights, and you may also have other rights which vary from state to state.

For the name of your nearest authorized NILES dealer, contact: NILES AUDIO CORPORATION, P.O. BOX 160818, Miami, Florida 33116-0818, or call 1-800-289-4434, 1-305-238-4373. Please be advised that NILES only sells its products via the Internet through a select group of authorized Internet dealers. These are listed on our website at [www.nilesaudio.com](http://www.nilesaudio.com). Products offered on the Internet through unauthorized Internet dealers are not covered by the NILES warranty and may be either:

- 1) goods acquired on a secondary or grey market
- 2) counterfeit or stolen goods
- 3) damaged, or defective goods

*Please fill in your product information and retain for your records.*

Model \_\_\_\_\_ Serial No. \_\_\_\_\_ Purchase Date \_\_\_\_\_

**ATTENTION: TO OUR VALUED CONSUMERS:**

To insure that consumers obtain quality pre-sale and after-sale support and service, NILES products are sold exclusively through authorized dealers. This warranty is VOID if the products have been purchased from an unauthorized dealer.





## CUSTOMER SERVICE – TECHNICAL SUPPORT

BY PHONE (IN USA)

**1-800-BUY-HIFI (289-4434)**

BY PHONE (OUTSIDE USA)

**1-305-238-4373**

CUSTOMER SERVICE HOURS

**8:00 AM to 5:30 PM ET**

TECHNICAL SUPPORT HOURS

**8:00 AM to 7:00 PM ET**

ON THE WEB

**[www.nilesaudio.com](http://www.nilesaudio.com)**

EMAIL TECHNICAL SUPPORT

**[techsupport@nilesaudio.com](mailto:techsupport@nilesaudio.com)**

EMAIL FOR PRODUCT SUGGESTIONS

**[productsuggestions@nilesaudio.com](mailto:productsuggestions@nilesaudio.com)**



E N G I N E E R E D B Y



**NILES®**

**Niles Audio Corporation  
12331 S.W. 130 Street Miami, Florida 33186  
1-305-238-4373**

**1-800-BUY-HIFI - www.nilesaudio.com**

©2009 Niles Audio Corporation. All rights reserved. Niles, the Niles logos, IntelliControl, IntelliFile, and iRemote are registered trademarks of Niles Audio Corporation. All other trademarks are the property of their respective owners. Niles reserves the right to change specifications, descriptions and prices without notice. The technical and other information contained herein is not intended to set forth all technical and other specifications. Designed and engineered in the USA. DS00584C