

IntelliControl[®]ICS

INTEGRATED CONTROL SOLUTIONS

QUICK START GUIDE

DMS4

DIGITAL MUSIC SERVER

ENGINEERED BY



NILES[®]

QUICK START GUIDE

FRONT PANEL

The following controls are available on the front panel of your IntelliControl® ICS DMS4 Digital Music Server.

1. **MENU button:** Press this button to display the main front panel functions screen on the LCD display of your DMS4 Digital Music Server.
2. **Front panel action buttons:** These four buttons have assignable functions as indicated by the labels at the bottom of the LCD display. For example, in the display opposite, the **Setup** action button will display the **Setup** options.
3. **Navigation buttons:** Move up, down, left and right through the front panel menu system. The button in the center is used to select items.
4. **Function buttons:** Control the playback of music on the currently selected audio output.

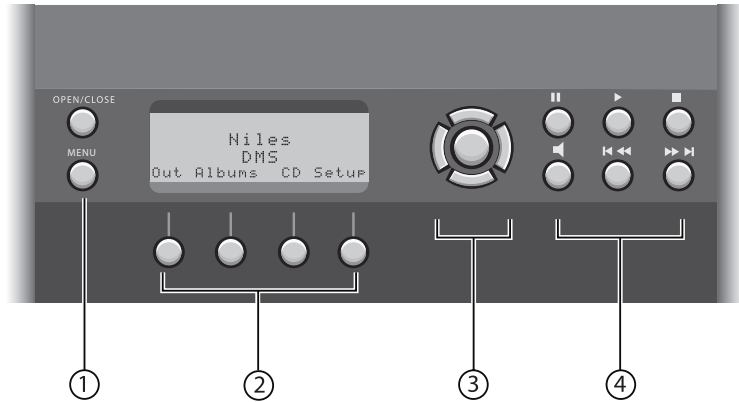


Fig. 1 - Front Panel Display

REMOTE CONTROL

Your DMS4 Digital Music Server remote control is used to control the television user interface.

1. **Menu key:** Displays the **Main Menu** on the television user interface.
2. **Alphanumeric keypad:** Use these keys to enter text and numbers where appropriate.
3. **Navigation keys:** Move up, down, left and right through the television user interface. The **Select** button in the center is used to select items.
4. **Function keys:** Control the playback of music on the currently selected audio output. The **Output** key is used to change the currently selected audio output.
5. **Library key:** Displays the main **Audio Library** screen on the television user interface.

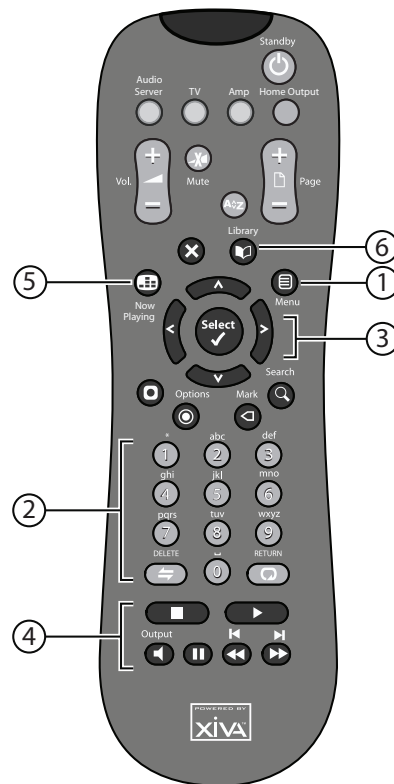


Fig. 2 - Remote Control

RECORDING FROM A CD

- Press the **OPEN/CLOSE** button on the front panel to open the CD tray.
- Place a CD in the tray.
- Press the **OPEN/CLOSE** button again to close the CD tray.

Where an Internet connection is present, your DMS4 Digital Music Server will automatically use the Gracenote® Music Recognition Service to obtain information about the CD.

Using the television user interface:

- Press the **Menu** key on your DMS4 Digital Music Server remote control to display the **Main Menu**.
- Use the **▲** and **▼** keys to highlight the **CD Tray** option and press the **Select** key.
- Press the **Record** key to begin the recording process.

From the list that appears use the **▲** and **▼** keys to choose a recording quality and press the **Start** key.

Note: You can listen to music in your **Audio Library** while a CD is being recorded.

Note: It is also possible to record a CD using the front panel interface, refer to page 29 of the User Guide for details.

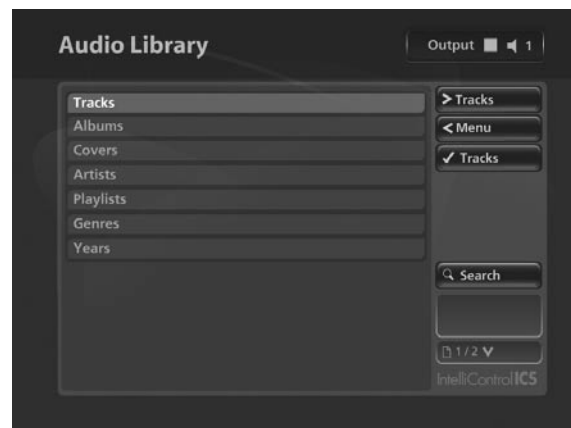


Fig. 3 - TV User Interface

PLAYING MUSIC

- Display the **Audio Library** by pressing the **Library** key on the remote control

The **Audio Library** menu allows you to choose how you want to browse your music collection. You can browse by track, album, cover, artist, genre, year, era, playlist or preset.

- Press the **▲** and **▼** keys to step between categories.

For example, if you select **Albums** you will see an alphabetical list of your album titles

To play music

- Use the **▲** and **▼** keys to highlight the item you would like to play
- Press the **➤** key to view the contents of the selected item
- Press the **✓ Play** key to begin playback

To stop play

- Press the **■** key on the front panel or the DMS4 Digital Music Server remote control

To pause play

- Press the **⏸** key on the front panel or your DMS4 Digital Music Server remote control

To skip to the next or previous track

- Press the **⏮** or **⏭** key on the front panel or your DMS4 Digital Music Server remote control

To seek within a track

- Hold down the **⏮** or **⏭** key on the front panel or your DMS4 Digital Music Server remote control

Play resumes from the new position when you release the key.

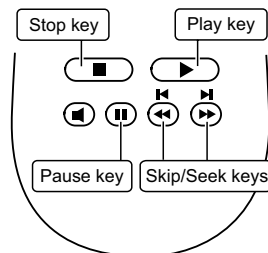


Fig 4. Function Keys on Remote Control

ENTERING TEXT

When text is editable using the DMS4 Digital Music Server remote control, the text entry screen will be displayed:

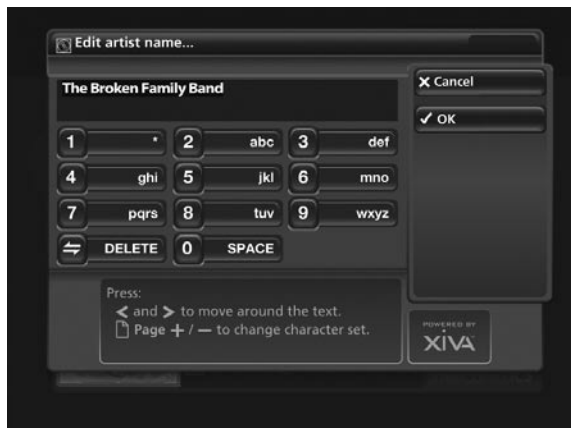


Fig 5. Entering Text via the TV User Interface

To enter text using the alphanumeric keypad

- Use the **◀** and **▶** keys to move the cursor to the required position
- Use the keys on the alphanumeric keypad to enter a letter. For example, to enter **S** press the **7** key four times, because **S** is the fourth letter on the **7** key
- Press the **DELETE** key on your DMS4 Digital Music Server remote control to delete characters
- Press the **Page +/-** key to toggle the character set and switch between upper-case and lower-case letters

CONNECTING TO THE INTERNET

- Press the **Menu** key on your DMS4 Digital Music Server remote control
- Use the **▲** and **▼** keys to highlight the **Set Up** option and press the **✓ Select** key
- Use the **▲** and **▼** keys again to highlight **Settings** and press the **✓ Select** key
- Choose the **Connection Settings** option and press **✓ Select**. The **Connection Settings** menu is displayed:

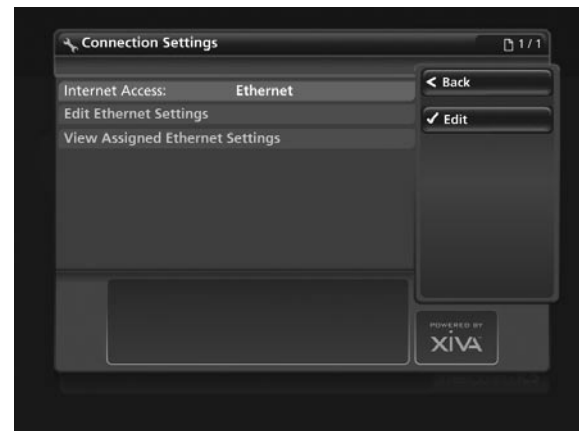


Fig. 6 The Connection Settings Menu Screen

- Ensure **Ethernet** is selected as the **Internet Access** method

Connecting via Ethernet

- Use the **▲** and **▼** keys to highlight **Edit Ethernet Settings** and press the **✓ Select** key

If you are using a broadband router or connecting via a home network with DHCP enabled, select **DHCP** as the **Mode**. Otherwise select **Static** and enter your Ethernet details manually in the **IP Address**, **Subnet Mask**, **Gateway** and **DNS** fields.

Note: When making changes to the **Static Ethernet Settings** it may be necessary to switch your DMS4 Digital Music Server off and then on again in order for the changes to take effect.

E N G I N E E R E D B Y



NILES®

1 - 800 - BUY - HIFI - www.nilesaudio.com

©2007 Niles Audio Corporation 12331 S.W. 130 Street, Miami, FL 33186. Telephone: (305) 238-4373. All rights reserved. Niles, the Niles logos, IntelliControl®, IntelliFile®, and iRemote® are registered trademarks of Niles Audio Corporation. All other trademarks are the property of their respective owners. Niles reserves the right to change specifications, descriptions and prices without notice. The technical and other information contained herein is not intended to set forth all technical and other specifications. Part No. PK00368-01.