



# Auriel 2.0

## Meet Your New Auriel Mobile App

### Auriel Mobile App 2.0 Features:

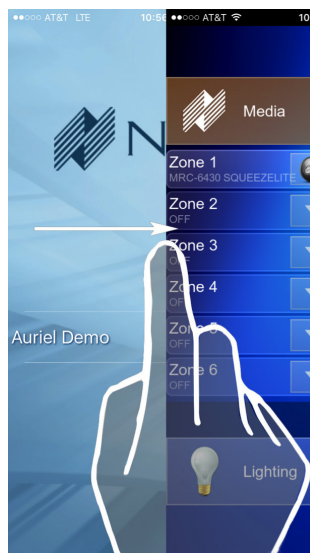
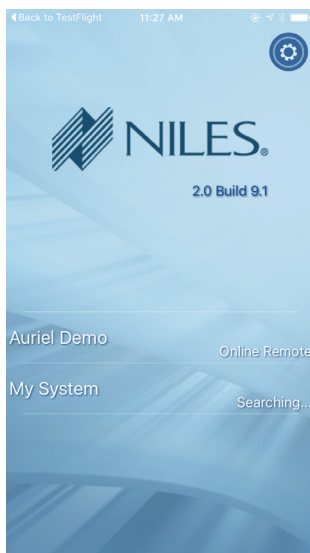
- New User Interface
- Remote Access – Access your Auriel MRC-6430 while away!
- App Passcode to for another layer of security
- Save Multiple Controller Logins If Desired

### Screens: First Launch



- New User Interface
- Remote Access – Access your Auriel MRC-6430 while away!
- App Passcode to for another layer of security
- Save Multiple Controller Logins If Desired

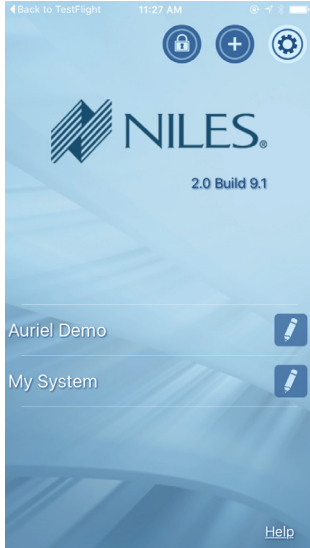
### App Home Screen








This screen will present all your configured controllers, connection status and their location relative to your mobile device.

**TIP:** Return to the app Home Screen from your Controller screen with a Left to Right swipe for the left edge of your screen. If you have more than one controller configured, you can also use the “< Systems” at the top of the screen next to your controller name.

## App Preferences

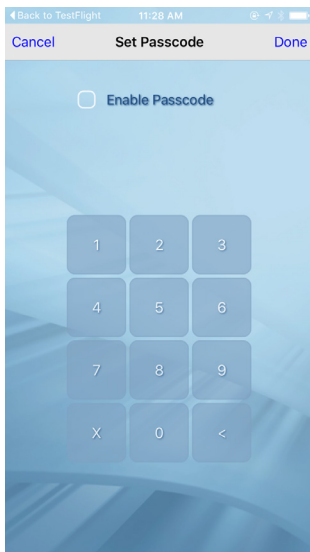


-  Use the Gear icon in the top corner to access app Preferences:
-  Set or Change Optional Passcode for the Auriel Mobile 2.0 app
-  Add a New System Controller
-  Close the Preference options
-  Edit or Delete configured Controllers

**TIP:** When you click on the Gear icon to access app Preferences, notice the “Help” link that appears at the bottom of the screen. Tap this link to find more information on your Auriel Mobile client.



## Configure App Passcode



Use this optimal setting as another layer of security for the app on your mobile device.

### To Enable:

1. Tap on Preferences > Lock lock icon on app Home Screen
2. Tap on “Enable App Passcode”
3. Type 4-digit Passcode
4. Confirm passcode by retyping 4-digit Passcode
5. Tap “Done” in upper right of the screen to save settings

### To Change Passcode:

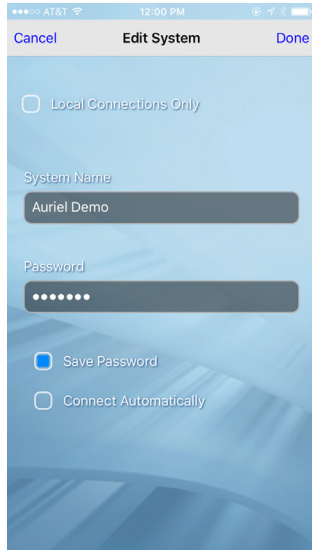
1. Tap on Preferences > Lock lock icon on app Home Screen
2. Enter current Passcode
3. Tap “Set New Passcode”
4. Type 4-digit Passcode
5. Confirm passcode by retyping 4-digit Passcode
6. Tap “Done” in upper right of the screen to save settings

### To Disable Passcode on your app:

1. Tap on Preferences > Lock lock icon on app Home Screen
2. Enter current Passcode
3. Tap on “Enable App Passcode” to change state to disables
4. Tap “Done” in upper right of the screen to save settings



## Set Up MRC-6430 for Remote Access



Tap the Preference [gear] and [+] to add a new controller  
Note that the default setting is “Local Connections Only” which will only scan for devices on your local network. While on the local network, uncheck this box to configure your Auriel Mobile client for remote access.

Add System Name, Password and option to save password on the mobile device. While on the local network, the local MRC-6430 name will auto-populate this field. If you are not on the network with your MRC-6430 you can enter the Controller Name and Password manually. See Auriel 2.0 User Guide for details on how to find your controller name and set up remote access.

### Local and Remote Connections

#### Local Network

If you have one controller on your local network that is not already in your list of saved controller, that controller name will be automatically added to “System Name” field for quick setup.

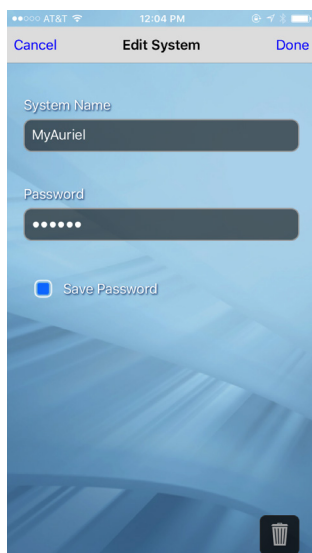
If you have more than one controller on your local network that is not already in your list of saved controller, you will see a wifi icon that when tapped will show all the controllers



#### Remote

For controllers not on your local network, just add System Name and password (as required).



## Edit System



Tap the  to reveal the edit icon  next to each controller. Tap on the edit icon to Edit or Delete a controller.

**Q: Where do I find the name of my controller?**

A: With Auriel Mobile 2.0 application, connecting to the controller on your local network will find and automatically add the controller name to your mobile application.

**Q: Can I rename my Auriel Controller?**

A: Renaming of the controller is not supported at this time. We will be adding that option in a later release.

**Q: I have the corret credentials for my controller but I continue to get “Rejection” notice when I try to connect with my mobile client. Why is that?**

A: Please make sure your controller is set up to allow remote access. See the Auriel guide for details on setting up remote access.

**Q: What do I do if I forget my passcode?**

A: With the current version of the mobile app (2.0) the passcode is stored on the mobile device and cannot be accessed by Niles. Delete the app from the phone, reinstall and reconfigure the app.